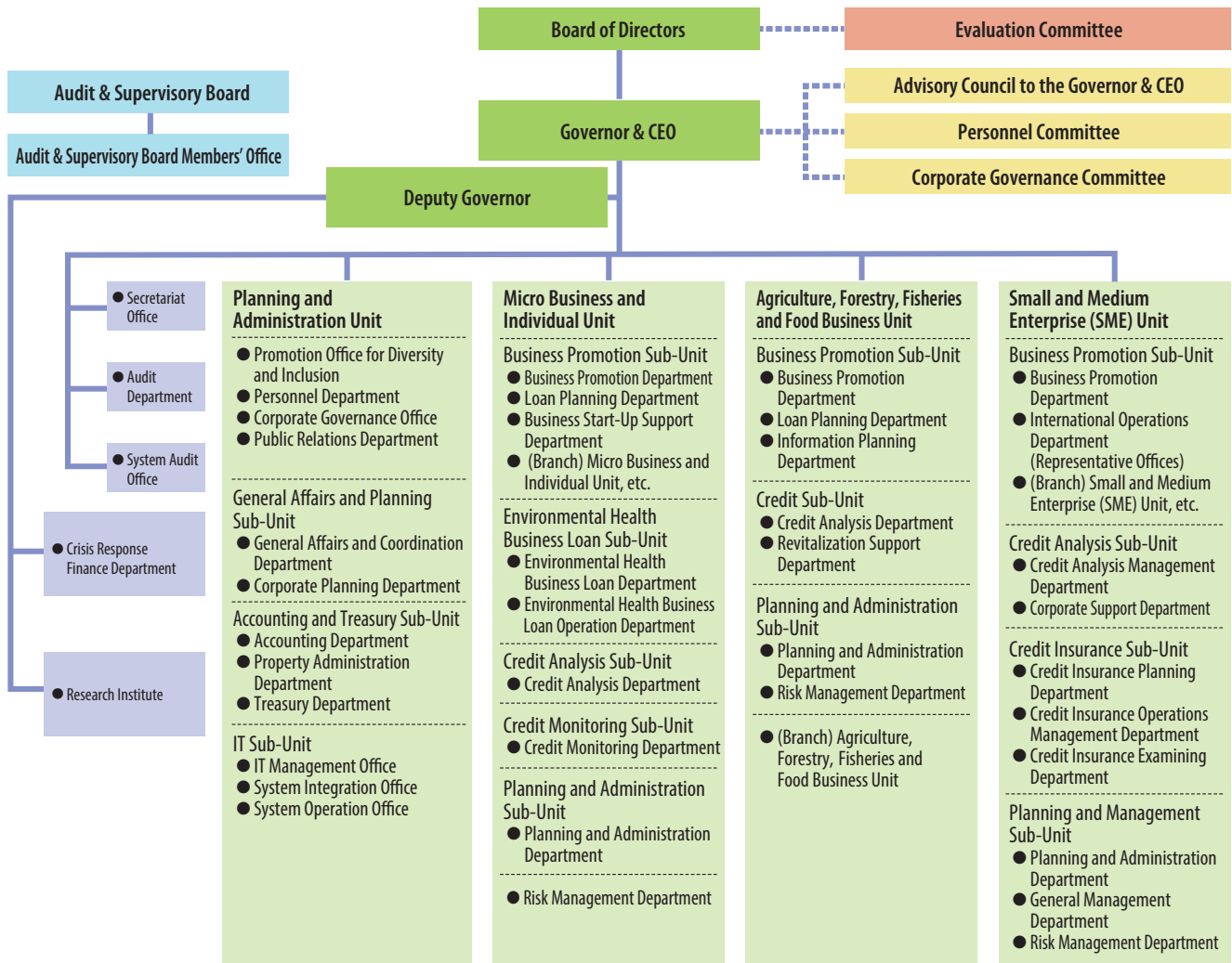


■ Organization and History ■

Organization	74
Office Locations	75
History of JFC	80

Organization

Organization Chart of Japan Finance Corporation



Directors and Audit & Supervisory Board Members (As of November 4, 2020)

Governor & CEO	TANAKA Kazuho	Managing Director	TAGUCHI Katsuyuki	External Executive Director	WATANABE Yoshiko
Deputy Governor	IWAMA Kunihiro	Managing Director	MARUYAMA Takanori	External Executive Director	OTANI Kunio
Senior Managing Director	ARAI Tsuyoshi	Executive Director	UNO Masao	Audit & Supervisory Board Member	JOKO Keisuke
Senior Managing Director	ICHIKAWA Kenta	Executive Director	MUNETOMO Teruo	Audit & Supervisory Board Member	KUSUMI Nobuyasu
Senior Managing Director	YOSHINO Kyoji	Executive Director	ESUMI Hirokazu	External Audit & Supervisory Board Member	YAMADA Yuichi
Senior Managing Director	HAMABE Tetsuya	Executive Director	SUZUKI Naoto	External Audit & Supervisory Board Member	MURATA Tsuneko
Managing Director	KATAOKA Yoshikazu	Executive Director	SOGAME Mikio		
Managing Director	WAKAI Katsuyuki	Executive Director	MANIWA Noriyuki		

Office Locations (As of July 2020)

	Location	Telephone Number
Head Office	Otemachi Financial City North Tower, 1-9-4, Otemachi, Chiyoda-ku, Tokyo 100-0004, Japan	
Hokkaido		
Sapporo Branch		
Micro Unit	Hokkaido Keizai Center Bldg., Nishi 2-2-2, Kita 1-jo, Chuo-ku, Sapporo-shi, Hokkaido 060-0001, Japan	+81-11-231-9131
AFFF Unit		+81-11-251-1261
SME Unit		+81-11-281-5221
Sapporo-Kita Branch		
Micro Unit	Ito 110 Bldg., Nishi 4-5-1, Kita 7-jo, Kita-ku, Sapporo-shi, Hokkaido 060-0807, Japan	+81-11-726-4221
Hakodate Branch		
Micro Unit	20-9, Toyokawacho, Hakodate-shi, Hokkaido 040-0065, Japan	+81-138-23-8291
SME Unit		+81-138-23-7175
Otaru Branch		
Micro Unit	2-1-3, Inaho, Otaru-shi, Hokkaido 047-0032, Japan	+81-134-23-1167
Asahikawa Branch		
Micro Unit	Asahi Seimei Asahikawa Bldg., 9-1704-12, Shijo-Dori, Asahikawa-shi, Hokkaido 070-0034, Japan	+81-166-23-5241
SME Unit		+81-166-24-4161
Muroran Branch		
Micro Unit	2-9-8, Higashimachi, Muroran-shi, Hokkaido 050-0083, Japan	+81-143-44-1731
Kushiro Branch		
Micro Unit	Doto Keizai Center Bldg., 1-1-1, Omachi, Kushiro-shi, Hokkaido 085-0847, Japan	+81-154-43-3330
SME Unit		+81-154-43-2541
Obihiro Branch		
Micro Unit	Obihiro Odori Bldg., Odoriminami 9-4, Obihiro-shi, Hokkaido 080-0010, Japan	+81-155-24-3525
AFFF Unit		+81-155-27-4011
Kitami Branch		
Micro Unit	1-2-22, Saiwaicho, Kitami-shi, Hokkaido 090-0036, Japan	+81-157-24-4115
AFFF Unit		+81-157-61-8212
Aomori		
Aomori Branch		
Micro Unit	AQUA Aomori Nagashima Bldg., 1-5-1, Nagashima, Aomori-shi, Aomori 030-0861, Japan	+81-17-723-2331
AFFF Unit		+81-17-777-4211
SME Unit		+81-17-734-2511
Hirosaki Branch		
Micro Unit	Hirosaki Shoko Kaigisho Kaikan, 18-1, Kamisayashimachi, Hirosaki-shi, Aomori 036-8354, Japan	+81-172-36-6303
Hachinohe Branch		
Micro Unit	1-2, Babacho, Hachinohe-shi, Aomori 031-0074, Japan	+81-178-22-6274
Iwate		
Morioka Branch		
Micro Unit	2-7-21, Saien, Morioka-shi, Iwate 020-0024, Japan	+81-19-623-4376
AFFF Unit		+81-19-653-5121
SME Unit		+81-19-623-6125
Ichinoseki Branch		
Micro Unit	1-9, Jonai, Ichinoseki-shi, Iwate 021-0877, Japan	+81-191-23-4157
Miyagi		
Sendai Branch		
Micro Business and Individual Unit I	Tokyo Tatemono Sendai Bldg., 1-6-35, Chuo, Aoba-ku, Sendai-shi, Miyagi 980-8452, Japan	+81-22-222-5173
Micro Business and Individual Unit II		+81-22-222-5377
AFFF Unit	Tokyo Tatemono Sendai Bldg., 1-6-35, Chuo, Aoba-ku, Sendai-shi, Miyagi 980-8454, Japan	+81-22-221-2331
SME Unit	Tokyo Tatemono Sendai Bldg., 1-6-35, Chuo, Aoba-ku, Sendai-shi, Miyagi 980-8453, Japan	+81-22-223-8141
Ishinomaki Branch		
Micro Unit	Meiji Chuo Bldg., 16-1, Kokucho, Ishinomaki-shi, Miyagi 986-0825, Japan	+81-225-94-1201

	Location	Telephone Number
Akita		
Akita Branch		
Micro Unit	Hokuto Bldg., 5-1-51, Naka-dori, Akita-shi, Akita 010-0001, Japan	+81-18-832-5641
AFFF Unit		+81-18-833-8247
SME Unit		+81-18-832-5511
Odate Branch		
Micro Unit	2-3-38, Onaricho, Odate-shi, Akita 017-8567, Japan	+81-186-42-3407
Yamagata		
Yamagata Branch		
Micro Unit	Yamagata Shoko Kaigisho Kaikan, 3-1-9, Nanokamachi, Yamagata-shi, Yamagata 990-0042, Japan	+81-23-642-1331
AFFF Unit		+81-23-625-6135
SME Unit		+81-23-641-7941
Yonezawa Branch		
Micro Unit	Yonezawa Shoko Kaigisho Kaikan, 4-1-30, Chuo, Yonezawa-shi, Yamagata 992-0045, Japan	+81-238-21-5711
Sakata Branch		
Micro Unit	1-1-2, Funabacho, Sakata-shi, Yamagata 998-0036, Japan	+81-234-22-3120
Fukushima		
Fukushima Branch		
Micro Unit	NBF Unix Bldg., 6-6, Sakaemachi, Fukushima-shi, Fukushima 960-8031, Japan	+81-24-523-2341
AFFF Unit		+81-24-521-3328
SME Unit		+81-24-522-9241
Aizuwakamatsu Branch		
Micro Unit	2-35, Nakamachi, Aizuwakamatsu-shi, Fukushima 965-0878, Japan	+81-242-27-3120
Koriyama Branch		
Micro Unit	Yamaso Koriyama Bldg., 1-6-21, Shimizudai, Koriyama-shi, Fukushima 963-8005, Japan	+81-24-923-7140
Iwaki Branch		
Micro Unit	1-5, Hishikawacho, Taira, Iwaki-shi, Fukushima 970-8026, Japan	+81-246-25-7251
Ibaraki		
Mito Branch		
Micro Unit	3-3-55, Minamimachi, Mito-shi, Ibaraki 310-0021, Japan	+81-29-221-7137
AFFF Unit		+81-29-232-3623
SME Unit		+81-29-231-4246
Hitachi Branch		
Micro Unit	Akiyama Bldg., 2-1-48, Saiwaicho, Hitachi-shi, Ibaraki 317-0073, Japan	+81-294-24-2451
Tsuchiura Branch		
Micro Unit	Tamagawa Tsuchiura Bldg., 1-1-26, Chuo, Tsuchiura-shi, Ibaraki 300-0043, Japan	+81-29-822-4141
Tochigi		
Utsunomiya Branch		
Micro Unit	1-31, Nibancho, Utsunomiya-shi, Tochigi 320-0813, Japan	+81-28-634-7141
AFFF Unit		+81-28-636-3901
SME Unit		+81-28-636-7171
Sano Branch		
Micro Unit	2806-1, Takasagocho, Sano-shi, Tochigi 327-0022, Japan	+81-283-22-3011
Gunma		
Maebashi Branch		
Micro Unit	1-6-19, Honmachi, Maebashi-shi, Gunma 371-0023, Japan	+81-27-223-7311
AFFF Unit		+81-27-243-6061
SME Unit		+81-27-243-0050
Takasaki Branch		
Micro Unit	Okaba Takasaki Bldg., 81, Renjakucho, Takasaki-shi, Gunma 370-0826, Japan	+81-27-326-1621

	Location	Telephone Number
Saitama		
Saitama Branch		
Micro Unit AFF Unit SME Unit	Omiya Miyacho Bldg., 1-109-1, Miyacho, Omiyaku, Saitama-shi, Saitama 330-0802, Japan	+81-48-643-3711 +81-48-645-5421 +81-48-643-8320
Urawa Branch		
Micro Unit	4-25-14, Kishicho, Urawa-ku, Saitama-shi, Saitama 330-0064, Japan	+81-48-822-7171
Kawagoe Branch		
Micro Unit	Nihon Seimei Kawagoe Bldg., 14-1, Wakitahoncho, Kawagoe-shi, Saitama 350-1123, Japan	+81-49-246-3211
Kumagaya Branch		
Micro Unit	2-45, Miyacho, Kumagaya-shi, Saitama 360-0041, Japan	+81-48-521-2731
Koshigaya Branch		
Micro Unit	Koshigaya Higashi Ekimae Bldg., 3-33, Yayoicho, Koshigaya-shi, Saitama 343-0816, Japan	+81-48-964-5561
Niigata		
Niigata Branch		
Micro Unit AFF Unit SME Unit	NBF Niigata Telecom Bldg., 4-4-27, Bandai, Chuoku, Niigata-shi, Niigata 950-0088, Japan	+81-25-246-2011 +81-25-240-8511 +81-25-244-3122
Nagaoka Branch		
Micro Unit	3-9-23, Senju, Nagaoka-shi, Niigata 940-0087, Japan	+81-258-36-4360
Sanjo Branch		
Micro Unit	Sanjo Shoko Kaigisho Kaikan, 1-20, Sugoro, Sanjoshi, Niigata 955-0092, Japan	+81-256-34-7511
Takada Branch		
Micro Unit	Asutopia Takada, 5-4-5 Honcho, Joetsu-shi, Niigata 943-0832, Japan	+81-25-524-2340
Nagano		
Nagano Branch		
Micro Unit AFF Unit	1291, Miwatamachi, Nagano-shi, Nagano 380- 0816, Japan	+81-26-233-2141 +81-26-233-2152
Matsumoto Branch		
Micro Unit SME Unit	Nihon Seimei Matsumotoekimae Bldg., 1-4-20, Chuo, Matsumoto-shi, Nagano 390-0811, Japan	+81-263-33-7070 +81-263-33-0300
Komoro Branch		
Micro Unit	Komoro Shoko Kaigisho Kaikan, 3-3-12, Aioicho, Komoro-shi, Nagano 384-0025, Japan	+81-267-22-2591
Ina Branch		
Micro Unit	3413-2, Arai, Ina-shi, Nagano 396-0025, Japan	+81-265-72-5195
Chiba		
Chiba Branch		
Micro Unit AFF Unit SME Unit	Sen City Tower, 1000, Shinmachi, Chuo-ku, Chiba- shi, Chiba 260-0028, Japan	+81-43-241-0078 +81-43-238-8501 +81-43-243-7121
Funabashi Branch		
Micro Unit	Funabashi Shoko Kaigisho Kaikan, 1-10-10, Honcho, Funabashi-shi, Chiba 273-0005, Japan	+81-47-433-8252
Tateyama Branch		
Micro Unit	1063-2, Hojo, Tateyama-shi, Chiba 294-0045, Japan	+81-470-22-2911
Matsudo Branch		
Micro Unit	Chibagin Bldg., 7-10, Honcho, Matsudo-shi, Chiba 271-0091, Japan	+81-47-367-1191
Tokyo		
Tokyo Branch		
Micro Unit AFF Unit SME Unit1, Tokyo Branch SME Unit2, Tokyo Branch SME Unit3, Tokyo Branch	Otemachi Financial City North Tower, 1-9-4, Otemachi, Chiyoda-ku, Tokyo 100-0004, Japan	+81-3-3270-1300 +81-3-3270-9791 +81-3-3270-1282 +81-3-3270-7994 +81-3-3270-6801
Tokyo-Chuo Branch		
Micro Unit	1-17-28, Shinkawa, Chuo-ku, Tokyo 104-0033, Japan	+81-3-3553-3441

	Location	Telephone Number
Shinjuku Branch		
Micro Unit SME Unit	1-14-9, Nishishinjuku, Shinjuku-ku, Tokyo 160- 0023, Japan	+81-3-3342-4171 +81-3-3343-1261
Ueno Branch		
Micro Unit	Nihon Seimei Ueno Bldg., 2-18-10, Higashiueno, Taito-ku, Tokyo 110-0015, Japan	+81-3-3835-1391
Koto Branch		
Micro Unit	Nihon Seimei Kinshicho Bldg., 3-7-8, Kotobashi, Sumida-ku, Tokyo 130-0022, Japan	+81-3-3631-8171
Gotanda Branch		
Micro Unit	Nihon Seimei Gotanda Bldg., 1-31-1, Nishigotanda, Shinagawa-ku, Tokyo 141-0031, Japan	+81-3-3490-7370
Omorikita Branch		
Micro Unit SME Unit	1-15-17, Omorikita, Ota-ku, Tokyo 143-0016, Japan	+81-3-3761-7551 +81-3-5763-3001
Shibuya Branch		
Micro Unit	Nihon Seimei Bldg., 1-21-1, Jinnan, Shibuya-ku, Tokyo 150-0041, Japan	+81-3-3464-3311
Ikebukuro Branch		
Micro Unit SME Unit	Nissei Ikebukuro Bldg., 1-24-1, Higashiikebukuro, Toshima-ku, Tokyo 170-0013, Japan	+81-3-3983-2131 +81-3-3986-1261
Itabashi Branch		
Micro Unit	Itabashi Hojin Kaikan, 39-2, Hikawacho, Itabashi- ku, Tokyo 173-0013, Japan	+81-3-3964-1811
Senju Branch		
Micro Unit SME Unit	Taiju Seimei Kitasenju Bldg., 41-1, Senjunakacho, Adachi-ku, Tokyo 120-0036, Japan	+81-3-3881-6175 +81-3-3870-2125
Hachioji Branch		
Micro Unit	T-5place, 7-3, Azumacho, Hachioji-shi, Tokyo 192- 0082, Japan	+81-42-646-7711
Tachikawa Branch		
Micro Unit SME Unit	Shin-Suzuharu Bldg., 2-8-3 Akebonocho, Tachikawa-shi, Tokyo 190-8551, Japan	+81-42-524-4191 +81-42-528-1261
Mitaka Branch		
Micro Unit	Sanshiro Bldg., 3-26-9, Shimorenjaku, Mitaka-shi, Tokyo 181-0013, Japan	+81-422-43-1151
Kanagawa		
Yokohama Branch		
Micro Unit AFF Unit SME Unit	2-21-2, Minaminakadori, Naka-ku, Yokohama-shi, Kanagawa 231-8831, Japan	+81-45-201-9912 +81-45-641-1841 +81-45-682-1061
Yokohama Nishiguchi Branch		
Micro Unit	Nihon Seimei Bldg., 1-11-7, Kitasaiwai, Nishi-ku, Yokohama-shi, Kanagawa 220-0004, Japan	+81-45-311-2641
Kawasaki Branch		
Micro Unit	Kawasaki Frontier Bldg., 11-2, Ekimaehoncho, Kawasaki-ku, Kawasaki-shi, Kanagawa 210-0007, Japan	+81-44-211-1211
Odawara Branch		
Micro Unit	Odawara Hakone Shoko Kaigisho Kaikan, 1-21, Jonai, Odawara-shi, Kanagawa 250-0014, Japan	+81-465-23-3175
Atsugi Branch		
Micro Unit SME Unit	Meiji Yasuda Seimei Atsugi Bldg., 3-11-21, Nakacho, Atsugi-shi, Kanagawa 243-8575, Japan	+81-46-222-3315 +81-46-297-5071
Yamanashi		
Kofu Branch		
Micro Unit AFF Unit SME Unit	2-26-2, Marunouchi, Kofu-shi, Yamanashi 400- 0031, Japan	+81-55-224-5361 +81-55-228-2182 +81-55-228-5790
Toyama		
Toyama Branch		
Micro Unit AFF Unit SME Unit	Toyama Daiichi Seimei Bldg., 2-25, Sakurabashidori, Toyama-shi, Toyama 930-0004, Japan	+81-76-431-1191 +81-76-441-8411 +81-76-442-2483
Takaoka Branch		
Micro Unit	Takaoka Shoko Bldg. Annex, 1-40, Marunouchi, Takaoka-shi, Toyama 933-0912, Japan	+81-766-25-1171

	Location	Telephone Number
Ishikawa		
Kanazawa Branch		
Micro Unit AFF Unit SME Unit	Asahi Seimei Kanazawa Bldg., 6-1, Minamicho, Kanazawa-shi, Ishikawa 920-0919, Japan	+81-76-263-7191 +81-76-263-6471 +81-76-231-4275
Komatsu Branch		
Micro Unit	Komatsu Shoko Kaigisho Bldg., Ni-1, Sonomachi, Komatsu-shi, Ishikawa 923-0801, Japan	+81-761-21-9101
Fukui		
Fukui Branch		
Micro Unit AFF Unit SME Unit	Fukui Shoko Kaigisho Bldg., 2-8-1, Nishikida, Fukui-shi, Fukui 918-8004, Japan	+81-776-33-1755 +81-776-33-2385 +81-776-33-0030
Takefu Branch		
Micro Unit	Century Plaza, 1-2-3, Fuchu, Echizen-shi, Fukui 915-0071, Japan	+81-778-23-1133
Gifu		
Gifu Branch		
Micro Unit AFF Unit SME Unit	Gifu Skywing 37 West Building, 6-31, Yoshinomachi, Gifu-shi, Gifu 500-8844, Japan	+81-58-263-2136 +81-58-264-4855 +81-58-265-3171
Tajimi Branch		
Micro Unit	Totetsu Bldg., 2-70-5, Honmachi, Tajimi-shi, Gifu 507-0033, Japan	+81-572-22-6341
Shizuoka		
Shizuoka Branch		
Micro Unit AFF Unit SME Unit	Daido Seimei Shizuoka Bldg., 59-6, Kuroganecho, Aoi-ku, Shizuoka-shi, Shizuoka 420-0851, Japan	+81-54-254-4411 +81-54-205-6070 +81-54-254-3631
Hamamatsu Branch		
Micro Unit SME Unit	Hamamatsu ACT Tower, 111-2, Itayamachi, Naka- ku, Hamamatsu-shi, Shizuoka 430-7723, Japan	+81-53-454-2341 +81-53-453-1611
Numazu Branch		
Micro Unit	5-7, Ichibacho, Numazu-shi, Shizuoka 410-8585, Japan	+81-55-931-5281
Aichi		
Nagoya Branch		
Micro Unit AFF Unit SME Unit	Horiuchi Bldg., 3-25-9, Meieki, Nakamura-ku, Nagoya-shi, Aichi 450-0002, Japan	+81-52-561-6301 +81-52-582-0741 +81-52-551-5181
Nagoya Naka Branch		
Micro Unit	Daiei Bldg., 1-11-20, Nishiki, Naka-ku, Nagoya-shi, Aichi 460-0003, Japan	+81-52-221-7241
Atsuta Branch		
Micro Unit SME Unit	7-30, Tamanoicho, Atsuta-ku, Nagoya-shi, Aichi 456-0025, Japan	+81-52-681-2271 +81-52-682-7881
Toyohashi Branch		
Micro Unit	2-15, Hacchodori, Toyohashi-shi, Aichi 440-0806, Japan	+81-532-52-3191
Okazaki Branch		
Micro Unit SME Unit	Asahi Seimei Okazaki Bldg., 1-4-2, Karasawacho, Okazaki-shi, Aichi 444-0043, Japan	+81-564-24-1711 +81-564-65-3025
Ichinomiya Branch		
Micro Unit	2-3-18, Daishi, Ichinomiya-shi, Aichi 491-0852, Japan	+81-586-73-3131
Mie		
Tsu Branch		
Micro Unit AFF Unit SME Unit	133, Yorozumachitsu, Tsu-shi, Mie 514-0021, Japan	+81-59-227-5211 +81-59-229-5750 +81-59-227-0251
Yokkaichi Branch		
Micro Unit	Asahi Seimei Yokkaichi Bldg., 1-12, Suwasakaemachi, Yokkaichi-shi, Mie 510-0086, Japan	+81-59-352-3121
Ise Branch		
Micro Unit	Sangin Nissei Bldg., 2-5-1, Iwabuchi, Ise-shi, Mie 516-0037, Japan	+81-596-24-5191

	Location	Telephone Number
Shiga		
Otsu Branch		
Micro Unit AFF Unit SME Unit	Shiga Bldg., 1-3-10, Umabayashi, Otsu-shi, Shiga 520-0051, Japan	+81-77-524-1656 +81-77-525-7195 +81-77-524-3825
Hikone Branch		
Micro Unit	11-34, Sawacho, Hikone-shi, Shiga 522-0075, Japan	+81-749-24-0201
Kyoto		
Kyoto Branch		
Micro Unit AFF Unit SME Unit	Urbannet Shijokarasuma Bldg., 101, Kankobokocho, Higashiiru, Shijodorimurumachi, Shimogyo-ku, Kyoto-shi, Kyoto 600-8009, Japan	+81-75-211-3231 +81-75-221-2147 +81-75-221-7825
Nishijin Branch		
Micro Unit	82, Okaminochi, Onmae-dori, Nishiiru, Ichijo-dori, Kamigyo-ku, Kyoto-shi, Kyoto 602-8375, Japan	+81-75-462-5121
Maizuru Branch		
Micro Unit	66, Uoya, Maizuru-shi, Kyoto 624-0923, Japan	+81-773-75-2211
Osaka		
Osaka Branch		
Micro Unit AFF Unit SME Unit1, Osaka Branch SME Unit2, Osaka Branch	Umeshin Dai-ichi Seimei Bldg., 2-3-5, Sonezaki, Kita-ku, Osaka-shi, Osaka 530-0057, Japan	+81-6-6315-0301 +81-6-6131-0750 +81-6-6314-7615 +81-6-6314-7810
Osaka Nishi Branch		
Micro Unit SME Unit	Shin-shinanobashi Bldg., 1-13-47, Nishihonmachi, Nishi-ku, Osaka-shi, Osaka 550-0005, Japan	+81-6-6538-1401 +81-6-4390-0366
Abeno Branch		
Micro Unit SME Unit	3-15-12, Matsuzakicho, Abeno-ku, Osaka-shi, Osaka 545-0053, Japan	+81-6-6621-1441 +81-6-6623-2160
Tamade Branch		
Micro Unit	Meiji Yasuda Seimei Tamade Bldg., 2-15-22, Tamadenaka, Nishinari-ku, Osaka-shi, Osaka 557- 0044, Japan	+81-6-6659-1261
Juso Branch		
Micro Unit	Meiji Yasuda Seimei Juso Bldg., 1-2-13, Shinkitano, Yodogawa-ku, Osaka-shi, Osaka 532-0025, Japan	+81-6-6305-1631
Osaka Minami Branch		
Micro Unit	Midosuji Jun Ashida Bldg., 2-2-7, Nishishinsaibashi, Chuo-ku, Osaka-shi, Osaka 542- 0086, Japan	+81-6-6211-7507
Sakai Branch		
Micro Unit SME Unit	Sakai Shoko Kaigisho Kaikan, 130-23, Nagasonecho, Kita-ku, Sakai-shi, Osaka 591-8025, Japan	+81-72-257-3600 +81-72-255-1261
Suita Branch		
Micro Unit	Matsuoka Bldg., 27-14, Asahimachi, Suita-shi, Osaka 564-0027, Japan	+81-6-6319-2061
Moriguchi Branch		
Micro Unit	4-10, Keihankita-hondori, Moriguchi-shi, Osaka 570-0094, Japan	+81-6-6993-6121
Izumisano Branch		
Micro Unit	3-1-6, Uemachi, Izumisano-shi, Osaka 598-0007, Japan	+81-72-462-1355
Higashiosaka Branch		
Micro Unit SME Unit	2-9-2, Takaidatomomachi, Higashiosaka-shi, Osaka 577-0054, Japan	+81-6-6782-1321 +81-6-6787-2661

	Location	Telephone Number
Hyogo		
Kobe Branch		
Micro Unit	Harborland Dia Nissei Bldg., 1-7-4, Higashikawasakicho, Chuo-ku, Kobe-shi, Hyogo 650-0044, Japan	+81-78-341-4981
AFFF Unit		+81-78-362-8451
SME Unit		+81-78-362-5961
Kobe Higashi Branch		
Micro Unit	KHK Nada Bldg., 3-6-15, Tomodacho, Nada-ku, Kobe-shi, Hyogo 657-0035, Japan	+81-78-854-2900
Himeji Branch		
Micro Unit	200, Shinobumachi, Himeji-shi, Hyogo 670-0917, Japan	+81-79-225-0571
Amagasaki Branch		
Micro Unit	4-18-1, Higashinaniwacho, Amagasaki-shi, Hyogo 660-0892, Japan	+81-6-6481-3601
Akashi Branch		
Micro Unit	8-36, Taruyamachi, Akashi-shi, Hyogo 673-0898, Japan	+81-78-912-4114
Toyooka Branch		
Micro Unit	10-6, Chiyodacho, Toyooka-shi, Hyogo 668-0032, Japan	+81-796-22-4327
Nara		
Nara Branch		
Micro Unit	Nara Center Bldg., 7-1-33, Omiyacho, Nara-shi, Nara 630-8115, Japan	+81-742-36-6700
AFFF Unit		+81-742-32-2270
SME Unit		+81-742-35-9910
Wakayama		
Wakayama Branch		
Micro Unit	58, Junibancho, Wakayama-shi, Wakayama 640- 8158, Japan	+81-73-422-3151
AFFF Unit		+81-73-423-0644
SME Unit		+81-73-431-9301
Tanabe Branch		
Micro Unit	1-11-27, Takao, Tanabe-shi, Wakayama 646-0028, Japan	+81-739-22-6120
Tottori		
Tottori Branch		
Micro Unit	Tottori JA-kaikan, 723, Suehiroonsencho Tottori- shi, Tottori 680-0833, Japan	+81-857-22-3156
AFFF Unit		+81-857-20-2151
SME Unit		+81-857-23-1641
Yonago Branch		
Micro Unit	Kounan-Asset Yonago Bldg., 2-106, Kamocho, Yonago-shi, Tottori 683-0823, Japan	+81-859-34-5821
Shimane		
Matsue Branch		
Micro Unit	Matsue Century Bldg., 111, Tonomachi, Matsue- shi, Shimane 690-0887, Japan	+81-852-23-2651
AFFF Unit		+81-852-26-1133
SME Unit		+81-852-21-0110
Hamada Branch		
Micro Unit	82-7, Tonomachi, Hamada-shi, Shimane 697-0027, Japan	+81-855-22-2835
Okayama		
Okayama Branch		
Micro Unit	Taiyo Seimei Okayama Yanagimachi Bldg., 1-1-27, Yanagimachi, Kita-ku, Okayama-shi, Okayama 700- 0904, Japan	+81-86-225-0011
AFFF Unit		+81-86-232-3611
SME Unit		+81-86-222-7666
Kurashiki Branch		
Micro Unit	Kurashiki Nakayoshi Bldg. II, 1-40, Saiwaicho, Kurashiki-shi, Okayama 710-0051, Japan	+81-86-425-8401
Tsuyama Branch		
Micro Unit	18-1, Sange, Tsuyama-shi, Okayama 708-0022, Japan	+81-868-22-6135
Hiroshima		
Hiroshima Branch		
Micro Unit	Hiroshima Train Vert Bldg., 1-2-22, Kamiyacho, Naka-ku, Hiroshima-shi, Hiroshima 730-0031, Japan	+81-82-244-2231
AFFF Unit		+81-82-249-9152
SME Unit		+81-82-247-9151
Kure Branch		
Micro Unit	Kure Shokokaigisho Bldg., 4-7-1-201, Hondori, Kure-shi, Hiroshima 737-0045, Japan	+81-823-24-2600

	Location	Telephone Number
Onomichi Branch		
Micro Unit	JB Honshi-kosoku Onomichi Bldg., 1-20, Higashigoshicho, Onomichi-shi, Hiroshima 722- 0036, Japan	+81-848-22-6111
Fukuyama Branch		
Micro Unit	2-2-7, Konancho, Fukuyama-shi, Hiroshima 720- 0814, Japan	+81-84-922-6550
Yamaguchi		
Yamaguchi Branch		
Micro Unit	New Media Plaza Yamaguchi, 1-10, Kumanochi, Yamaguchi-shi, Yamaguchi 753-0077, Japan	+81-83-922-3660
AFFF Unit		+81-83-922-2140
Shimonoseki Branch		
Micro Unit	2-4-3, Hosoecho, Shimonoseki-shi, Yamaguchi 750-0016, Japan	+81-83-222-6225
SME Unit		+81-83-223-2251
Iwakuni Branch		
Micro Unit	ARK Bldg. II, 4-1-3, Marifumachi, Iwakuni-shi, Yamaguchi 740-0018, Japan	+81-827-22-6265
Tokuyama Branch		
Micro Unit	Daido Seimei Tokuyama Bldg. 1-3 Honcho, Shunan-shi, Yamaguchi 745-0036, Japan	+81-834-21-3455
Tokushima		
Tokushima Branch		
Micro Unit	1-58, Nakazucho, Tokushima-shi, Tokushima 770- 0856, Japan	+81-88-622-7271
AFFF Unit		+81-88-656-6880
SME Unit		+81-88-625-7790
Kagawa		
Takamatsu Branch		
Micro Unit	ICHIGO Takamatsu Bldg., 2-2-7 Kotobukicho, Takamatsu-shi, Kagawa 760-0023, Japan	+81-87-851-0181
AFFF Unit		+81-87-851-2880
SME Unit		+81-87-851-9141
Ehime		
Matsuyama Branch		
Micro Unit	6-7-3, Sanbancho, Matsuyama-shi, Ehime 790- 0003, Japan	+81-89-941-6148
AFFF Unit		+81-89-933-3371
SME Unit		+81-89-943-1231
Uwajima Branch		
Micro Unit	Shokokaigisho Kaikan, 1-3-24, Marunouchi, Uwajima-shi, Ehime 798-0060, Japan	+81-895-22-4766
Niihama Branch		
Micro Unit	3-3, Shigemotocho, Niihama-shi, Ehime 792-8691, Japan	+81-897-33-9101
Kochi		
Kochi Branch		
Micro Unit	Kochi Chuo Business Square, 2-26, Sakaimachi, Kochi-shi, Kochi 780-0834, Japan	+81-88-822-3191
AFFF Unit		+81-88-825-1091
SME Unit		+81-88-875-0281
Fukuoka		
Fukuoka Branch		
Micro Unit	3-21-12, Hakataekimae, Hakata-ku, Fukuoka-shi, Fukuoka 812-0011, Japan	+81-92-411-9111
AFFF Unit		+81-92-451-1780
SME Unit		+81-92-431-5296
Fukuoka Nishi Branch		
Micro Unit	ND Bldg., 1-4-1, Daimyo, Chuo-ku, Fukuoka-shi, Fukuoka 810-0041, Japan	+81-92-712-4381
Kitakyushu Branch		
Micro Unit	Daido Seimei Kitakyushu Bldg., 1-10-10, Kajimachi, Kokurakita-ku, Kitakyushu-shi, Fukuoka 802-0004, Japan	+81-93-541-7550
SME Unit		+81-93-531-9191
Yahata Branch		
Micro Unit	Earth Court Kurosakiekimae Bldg., 3-1-7, Kurosaki, Yahatanishi-ku, Kitakyushu-shi, Fukuoka 806- 0021, Japan	+81-93-641-7715
Kurume Branch		
Micro Unit	Daido Seimei Kurume Bldg., 38-1, Higashimachi, Kurume-shi, Fukuoka 830-0032, Japan	+81-942-34-1212

	Location	Telephone Number
Saga		
Saga Branch		
Micro Unit AFFF Unit SME Unit	4-21, Ekiminamihonmachi, Saga-shi, Saga 840-0816, Japan	+81-952-22-3341 +81-952-27-4120 +81-952-24-7224
Nagasaki		
Nagasaki Branch		
Micro Unit AFFF Unit SME Unit	10-4, Daikokumachi, Nagasaki-shi, Nagasaki 850-0057, Japan	+81-95-824-3141 +81-95-824-6221 +81-95-823-6191
Sasebo Branch		
Micro Unit	2-21, Tenmachi, Sasebo-shi, Nagasaki 857-0043, Japan	+81-956-22-9155
Kumamoto		
Kumamoto Branch		
Micro Unit AFFF Unit SME Unit	4-22, Anseimachi, Chuo-ku, Kumamoto-shi, Kumamoto 860-0801, Japan	+81-96-353-6121 +81-96-353-3104 +81-96-352-9155
Yatsushiro Branch		
Micro Unit	4-17, Demachi, Yatsushiro-shi, Kumamoto 866-0857, Japan	+81-965-32-5195
Oita		
Oita Branch		
Micro Unit AFFF Unit SME Unit	2-1-12, Miyakomachi, Oita-shi, Oita 870-0034, Japan	+81-97-535-0331 +81-97-532-8491 +81-97-532-4106
Beppu Branch		
Micro Unit	9-1, Mochigahamacho, Beppu-shi, Oita 874-0924, Japan	+81-977-25-1151
Miyazaki		
Miyazaki Branch		
Micro Unit AFFF Unit SME Unit	3-6-30, Tachibanadorihigashi, Miyazaki-shi, Miyazaki 880-0805, Japan	+81-985-23-3274 +81-985-29-6811 +81-985-24-4214
Nobeoka Branch		
Micro Unit	1-3-10, Senokuchimachi, Nobeoka-shi, Miyazaki 882-0045, Japan	+81-982-33-6311
Kagoshima		
Kagoshima Branch		
Micro Unit AFFF Unit SME Unit	1-26, Meizancho, Kagoshima-shi, Kagoshima 892-0821, Japan	+81-99-224-1241 +81-99-805-0511 +81-99-223-2221
Kanoya Branch		
Micro Unit	2-19, Otemachi, Kanoya-shi, Kagoshima 893-0009, Japan	+81-994-42-5141
Sendai Branch		
Micro Unit	Nangoku Shokusan Sendai Bldg., 5-29, Nishimukodacho, Satsumasendai-shi, Kagoshima 895-0027, Japan	+81-996-20-2191

Notes: 1. Operations conducted at branches include those carried out by the Micro Business and Individual Unit; the Agriculture, Forestry, Fisheries and Food Business Unit; and the Small and Medium Enterprise (SME) Unit. In the table above, the listing of specific units under a branch indicates that specialist staff members are permanently assigned to conduct respective unit operations at that branch.

2. For branches that do not have permanently assigned specialist staff for a particular unit, consulting services and information provided by specialists from that unit are available through such measures as regular specialist staff visits.

Overseas Representative Offices

	Location	Telephone Number
Representative Office in Bangkok	9th Floor, Park Ventures Ecoplex, 57 Wireless Road, Lumpini, Patumwan, Bangkok 10330, Thailand	+66-2-252-5496
Representative Office in Shanghai	R. N. 1616, Shanghai International Trade Center, No. 2201, Yan An Xi Lu, Shanghai 200336, P. R. China	+86-21-6275-8908

History of JFC

[Micro Business and Individual Unit]

Date	People's Finance Corporation-related events	Environmental Sanitation Business Financing Corporation-related events
Jun. 1949	People's Finance Corporation established	
Sep. 1967		Environmental Sanitation Business Financing Corporation established
Oct. 1967	Start of trustee operations for Environmental Sanitation Business Financing Corporation upon its creation	
Jul. 1972		Private financial institutions begin to be engaged directly for trustee operations
Jan. 1982		Direct loans commenced
Date	National Life Finance Corporation-related events	
Sep. 1997	Cabinet decision reached on Reorganization and Rationalization Plan for Special Public Corporations covering integration of People's Finance Corporation and Environmental Sanitation Business Financing Corporation	
May 1999	National Life Finance Corporation Act (or Act on Partial Revision of People's Finance Corporation Act) enacted	
Oct. 1999	The People's Finance Corporation changed its name to the National Life Finance Corporation (NLFC) in accordance with the National Life Finance Corporation Act NLFC inherits all rights and duties of the dissolved Environmental Sanitation Business Finance Corporation	
Oct. 2008	JFC is established based on the Japan Finance Corporation Act and excluding assets inherited by the government, inherited all rights and obligations (Micro Business and Individual Unit)	

[Agriculture, Forestry, Fisheries and Food Business Unit]

Date	Events
Apr. 1953	Agriculture, Forestry and Fisheries Finance Corporation (AFC) established Begins offering cosigned loans
Sep. 1958	Direct loans commenced
Jul. 2002	Established investment business for agricultural corporation investment development firms
Oct. 2008	JFC is established based on the Japan Finance Corporation Act and excluding assets inherited by the government, inherited all rights and obligations (Agriculture, Forestry, Fisheries and Food Business Unit)

[Small and Medium Enterprise (SME) Unit]

Date	Japan Finance Corporation for Small and Medium Enterprise-related events	Small Business Credit Insurance Corporation-related events
Aug. 1953	Japan Finance Corporation for Small and Medium Enterprise (JASME) established	
Sep. 1953	Agency loans commenced	
Oct. 1955	Direct loans commenced	
Jul. 1958		Small Business Credit Insurance Corporation (Japan CIC) established (Credit insurance operations for small and medium enterprises and loan operations to Credit Guarantee Corporations (CGC) transferred from Small and Medium Enterprise Agency)
Oct. 1984		Japan CIC takes over machinery credit insurance operations from the Ministry of International Trade and Industry (MITI)
Dec. 1998		Special Insurance Programs for Mid-size Enterprises commenced
Jul. 1999		Japan Small and Medium Enterprise Corporation-related events
Apr. 2003		Japan Small and Medium Enterprise Corporation (JASMEC) established (takes over operations of Small Business Credit Insurance Corporation, etc.)
Jul. 2004		Migration of machinery credit insurance operations to Transitional Operation of the Machinery Credit Insurance Programs
Jul. 2004	Scope of operations expanded as a result of partial revision to the Japan Finance Corporation for Small and Medium Enterprise Act (Securitization Support Programs commenced, JASMEC's Credit Insurance Programs inherited.)	
Oct. 2008	JFC is established based on the Japan Finance Corporation Act and excluding assets inherited by the government, inherits all rights and obligations (Small and Medium Enterprise Unit)	

[Japan Finance Corporation]

Date	Events
Dec. 2005	Cabinet Decision on Important Policy for Administrative Reform
May 2006	Act on Promotion of Administrative Reform for Realization of Small and Efficient Government enacted
Jun. 2006	System Design regarding the Reform of Policy-based Finance adopted by the council for the Reform of policy-based Finance
May 2007	Japan Finance Corporation Act and "Act on Special Measures to Enable Smooth Restructuring of US Forces" established to regulate the operations of the Finance Department for Facilitating Realignment of U.S. Forces Japan
Oct. 2008	JFC is established based on the Japan Finance Corporation Act JFC inherits all rights and obligations, excluding assets inherited by the government, from the National Life Finance Corporation (NLFC) (now Micro Business and Individual Unit), Agriculture, Forestry and Fisheries Finance Corporation (AFC) (now Agriculture, Forestry and Fisheries and Food Business Unit), Japan Finance Corporation for Small and Medium Enterprise (now Small and Medium Enterprise Unit) and the International Financial Operations (IFOs) of the (former) Japan Bank for International Cooperation (JBIC) (now Japan Bank for International Cooperation (JBIC)) Based on "laws related to establishment of laws concerning implementation of the Japan Finance Corporation Act," even following the establishment of JFC operations of the Finance Department for Facilitating Realignment of U.S. Forces Japan are inherited as operations to be conducted by the Japan Bank for International Cooperation (JBIC) Operations to Facilitate Crisis Responses established
Apr. 2010	Established special account for business related to the Finance Department for Facilitating Realignment of U.S. Forces Japan (Finance Department for Facilitating Realignment of U.S. Forces Japan accounts)
Aug. 2010	Established special account for business related to the Operations to Facilitate Specific Businesses Promotion (Operations to Facilitate Specific Businesses Promotion accounts)
Apr. 2011	The Japan Bank for International Cooperation Act enacted. (Decision to separate JBIC from JFC effective April 1, 2012)
Jul. 2011	Operations to Facilitate Business Restructuring Promotion, etc. commenced
Mar. 2012	"Laws revising portions of the Okinawa Promotion and Development Special Treatment Act" enacted. It is determined that JFC will merge with the Okinawa Development Finance Corporation (ODFC) from FY2022
Apr. 2012	JBIC separated from JFC JBIC operations and financial operations for facilitating realignment of U.S. forces in Japan transferred to the Japan Bank for International Cooperation
Jan. 2014	Operations to Facilitate Business Restructuring Promotion commenced