

Organization and History

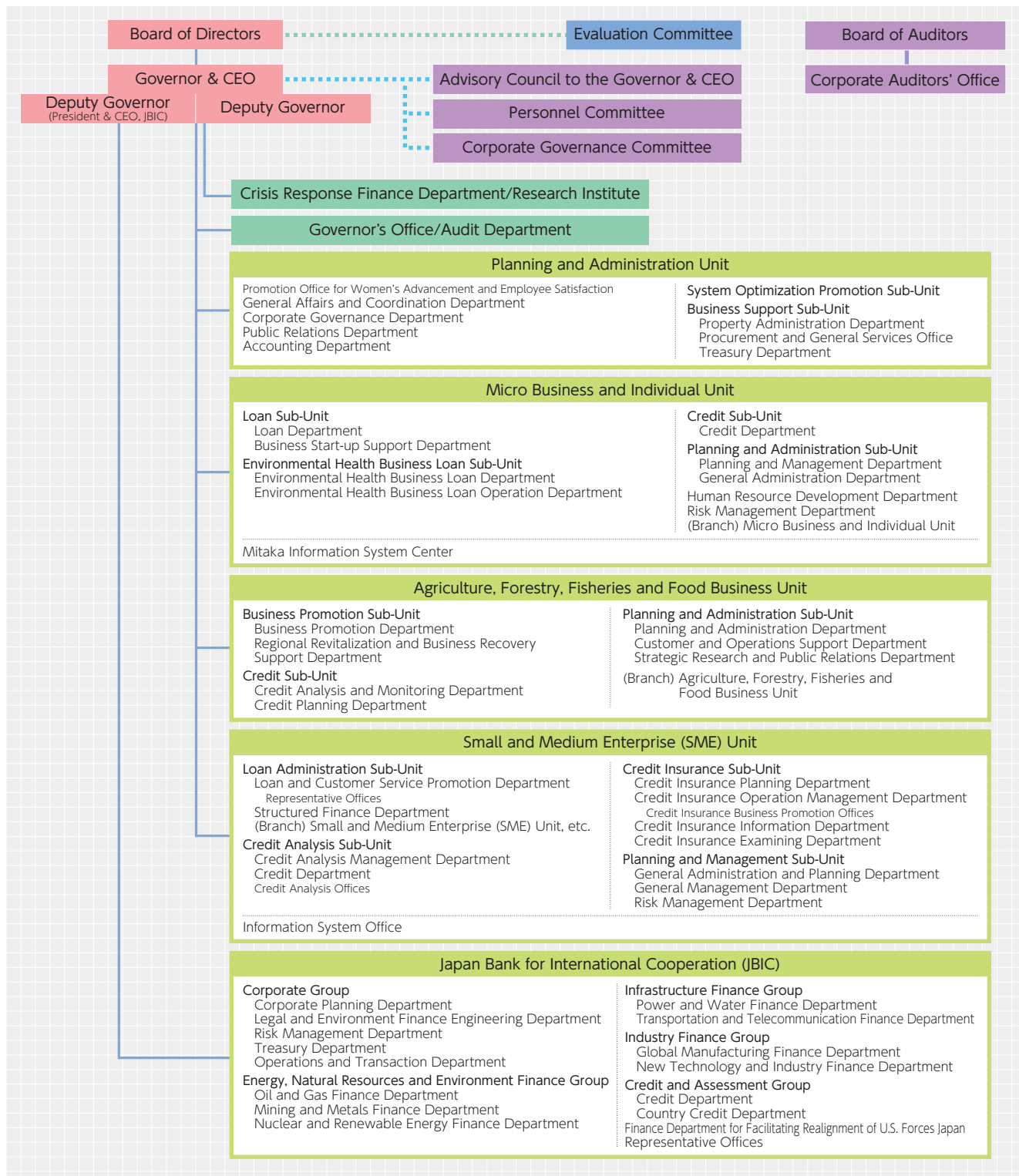


1	Organization	64
2	Office Locations	65
3	History of JFC	74



1 Organization

Organization Chart of Japan Finance Corporation



Directors and Corporate Auditors (As of June 22, 2011)

Governor & CEO	Shosaku Yasui	Managing Director	Yoshio Nakamura	Executive Director	Yasushi Yamazaki
Deputy Governor	Koichi Hosokawa	Managing Director	Masahiko Hara	Executive Director	Masafumi Yamamoto
President & CEO, JBIC	Hiroshi Watanabe	Managing Director	Hiroshi Minagawa	External Executive Director	Sachiko Hayakawa
Senior Managing Director	Ryuhei Katsuno	Managing Director	Kozo Yamamoto	External Executive Director	Hirofumi Miki
Senior Managing Director	Masatoshi Sakano	Executive Director	Masaharu Miyahara	Corporate Auditor	Katsufumi Nomura
Senior Managing Director	Yoshihiko Murase	Executive Director	Hiroo Motegi	Corporate Auditor	Jun Kanamori
Senior Managing Director	Kazuhiko Bando	Executive Director	Masami Yoshida	External Auditor	Toshio Ikeda
Managing Director	Fumio Hoshi	Executive Director	Kohei Nakanishi	External Auditor	Nobuko Takahashi
Managing Director	Yasutaka Tobita	Executive Director	Yasuhiro Mitsumasu		

2 Office Locations (As of October 1, 2011)

Micro Business and Individual Unit (Micro Unit)
Agriculture, Forestry, Fisheries and Food Business Unit (AFFF Unit)
Small and Medium Enterprise Unit (SME Unit)
Japan Bank for International Cooperation (JBIC)

	Location	Telephone Number
Head Office (JBIC)	1-9-3, Otemachi, Chiyoda-ku, Tokyo, 100-0004, Japan (1-4-1, Otemachi, Chiyoda-ku, Tokyo, 100-8144, Japan)	
Hokkaido		
Sapporo Branch		
Micro Unit	Hokkaido Keizai Center Bldg., Nishi 2-2-2, Kita 1-jo Chuo-ku, Sapporo-shi, Hokkaido 060-0001, Japan	+81-11-231-9131
AFFF Unit		+81-11-251-1261
SME Unit		+81-11-281-5221
Sapporo-Kita Branch		
Micro Unit	Ito Bldg*110 Bldg., Nishi 4-5-1, Kita 7-jo, Kita-ku, Sapporo-shi, Hokkaido 060-0807, Japan	+81-11-726-4221
Hakodate Branch		
Micro Unit	20-9, Toyokawacho, Hakodate-shi, Hokkaido 040-0065, Japan	+81-138-23-8291
SME Unit		+81-138-23-7175
Otaru Branch		
Micro Unit	2-1-3, Inaho, Otaru-shi, Hokkaido 047-0032, Japan	+81-134-23-1167
Asahikawa Branch		
Micro Unit	Asahi Seimei Asahikawa Bldg., 9-1704-12, Shijo-Dori, Asahikawa-shi, Hokkaido 070-0034, Japan	+81-166-23-5241
SME Unit		+81-166-24-4161
Muroran Branch		
Micro Unit	2-9-8, Higashimachi, Muroran-shi, Hokkaido 050-0083, Japan	+81-143-44-1731
Kushiro Branch		
Micro Unit	Doto Keizai Center Bldg., 1-1-1, Omachi, Kushiro-shi, Hokkaido 085-0847, Japan	+81-154-43-3330
SME Unit		+81-154-43-2541
Obihiro Branch		
Micro Unit	Minami 6-2, Nishi 3-jo, Obihiro-shi, Hokkaido 080-0013, Japan	+81-155-24-3525
AFFF Unit		+81-155-27-4011
Kitami Branch		
Micro Unit	1-2-22, Saiwaicho, Kitami-shi, Hokkaido 090-0036, Japan	+81-157-24-4115
AFFF Unit		+81-157-61-8212
Aomori		
Aomori Branch		
Micro Unit	1-4-2, Nagashima, Aomori-shi, Aomori 030-0861, Japan	+81-17-723-2331
AFFF Unit		+81-17-777-4211
SME Unit		+81-17-734-2511
Hirosaki Branch		
Micro Unit	Hirosaki Shoko Kaigisho Kaikan, 18-1, Kamisayashimachi, Hirosaki-shi, Aomori 036-8354, Japan	+81-172-36-6303
Hachinohe Branch		
Micro Unit	1-2, Baba-cho, Hachinohe-shi, Aomori 031-0074, Japan	+81-178-22-6274
Iwate		
Morioka Branch		
Micro Unit	77 Nihon Seimei Morioka Bldg., 3-3-10, O-dori, Morioka-shi, Iwate 020-0022, Japan	+81-19-623-4376
AFFF Unit	Sumitomo Seimei Bldg., 2-2-5, Chuo-tori, Morioka-shi, Iwate 020-0021, Japan	+81-19-653-5121
SME Unit	Malios, 2-9-1, Moriokaeki Nishi-tori, Morioka-shi, Iwate 020-0045, Japan	+81-19-623-6125
Ichinoseki Branch		
Micro Unit	1-9, Jonai, Ichinoseki-shi, Iwate 021-0877, Japan	+81-191-23-4157
Miyagi		
Sendai Branch		
Micro Unit	Tokyo Tatemono Sendai Bldg., 1-6-35, Chuo, Aoba-ku, Sendai-shi, Miyagi 980-8452, Japan	+81-22-222-5173
AFFF Unit	Tokyo Tatemono Sendai Bldg., 1-6-35, Chuo, Aoba-ku, Sendai-shi, Miyagi 980-8454, Japan	+81-22-221-2331
SME Unit	Tokyo Tatemono Sendai Bldg., 1-6-35, Chuo, Aoba-ku, Sendai-shi, Miyagi 980-8453, Japan	+81-22-223-8141
Ishinomaki Branch		
Micro Unit	Meiji Chuo Bldg., 16-1, Kokucho, Ishinomaki-shi, Miyagi 986-0825, Japan	+81-225-94-1201
Akita		
Akita Branch		
Micro Unit	Hokuto Bldg., 5-1-51, Naka-dori, Akita-shi, Akita 010-0001, Japan	+81-18-832-5641
AFFF Unit		+81-18-833-8247
SME Unit		+81-18-832-5511
Odate Branch		
Micro Unit	2-3-38, Onaricho, Odate-shi, Akita 017-8567, Japan	+81-186-42-3407

	Location	Telephone Number
Yamagata		
Yamagata Branch		
Micro Unit AFFF Unit SME Unit	Yamagata Shoko Kaigisho Kaikan, 3-1-9, Nanukamachi, Yamagata-shi, Yamagata 990-0042, Japan	+81-23-642-1331 +81-23-625-6135 +81-23-641-7941
Yonezawa Branch		
Micro Unit	Yonezawa Shoko Kaigisho Kaikan, 4-1-30, Chuo, Yonezawa-shi, Yamagata 992-0045, Japan	+81-238-21-5711
Sakata Branch		
Micro Unit	1-1-2, Funabacho, Sakata-shi, Yamagata 998-0036, Japan	+81-234-22-3120
Fukushima		
Fukushima Branch		
Micro Unit AFFF Unit	1-16, Omachi, Fukushima-shi, Fukushima 960-8041, Japan	+81-24-523-2341 +81-24-521-3328
SME Unit	NBF Unix Bldg., 6-6, Sakaemachi, Fukushima-shi, Fukushima 960-8031, Japan	+81-24-522-9241
Aizuwakamatsu Branch		
Micro Unit	2-35, Nakamachi, Aizuwakamatsu-shi, Fukushima 965-0878, Japan	+81-242-27-3120
Koriyama Branch		
Micro Unit	Yamaso Koriyama Bldg., 1-6-21, Shimizudai, Koriyama-shi, Fukushima 963-8005, Japan	+81-24-923-7140
Iwaki Branch		
Micro Unit	1-5, Taira, Hishikawacho, Iwaki-shi, Fukushima 970-8026, Japan	+81-246-25-7251
Ibaraki		
Mito Branch		
Micro Unit AFFF Unit SME Unit	Mito-Izumicho Daiichi Seimei Bldg., 1-2-4, Izumicho, Mito-shi, Ibaraki 310-0026, Japan	+81-29-221-7137 +81-29-232-3623 +81-29-231-4246
Hitachi Branch		
Micro Unit	Mitsui Seimei Hitachi Bldg., 1-4-1, Saiwaicho, Hitachi-shi, Ibaraki 317-0073, Japan	+81-294-24-2451
Tsuchiura Branch		
Micro Unit	Nihon Seimei Tsuchiura Bldg., 1-1-26, Chuo, Tsuchiura-shi, Ibaraki 300-0043, Japan	+81-29-822-4141
Tochigi		
Utsunomiya Branch		
Micro Unit AFFF Unit SME Unit	1-31, Nibancho, Utsunomiya-shi, Tochigi 320-0813, Japan	+81-28-634-7141 +81-28-636-3901 +81-28-636-7171
Sano Branch		
Micro Unit	2649-3, Kameicho, Sano-shi, Tochigi 327-0024, Japan	+81-283-22-3011
Gunma		
Maebashi Branch		
Micro Unit AFFF Unit	1-6-19, Honmachi, Maebashi-shi, Gunma 371-0023, Japan	+81-27-223-7311 +81-27-243-6061
SME Unit	Maebashi Center Bldg., 2-13-11, Honmachi, Maebashi-shi, Gunma 371-0023, Japan	+81-27-235-8686
Takasaki Branch		
Micro Unit	Nihon Seimei Takasaki Bldg., 81, Renjakucho, Takasaki-shi, Gunma 370-0826, Japan	+81-27-326-1621
Saitama		
Saitama Branch		
Micro Unit AFFF Unit SME Unit	Omiya Miyacho Bldg., 1-109-1, Miyacho, Omiya-ku, Saitama-shi, Saitama 330-0802, Japan	+81-48-643-3711 +81-48-645-5421 +81-48-643-8320
Urawa Branch		
Micro Unit	4-25-14, Kishicho, Urawa-ku, Saitama-shi, Saitama 330-0064, Japan	+81-48-822-7171
Kawagoe Branch		
Micro Unit	Nihon Seimei Kawagoe Bldg., 14-1, Wakitahoncho, Kawagoe-shi, Saitama 350-1123, Japan	+81-49-246-3211
Kumagaya Branch		
Micro Unit	2-45, Miyacho, Kumagaya-shi, Saitama 360-0041, Japan	+81-48-521-2731
Koshigaya Branch		
Micro Unit	Meiji Yasuda Seimei Koshigaya Bldg., 3-33, Yayoicho, Koshigaya-shi, Saitama 343-0816, Japan	+81-48-964-5561
Chiba		
Chiba Branch		
Micro Unit AFFF Unit	4-13-9, Chuo, Chuo-ku, Chiba-shi, Chiba 260-0013, Japan	+81-43-227-1171 +81-43-227-4435
SME Unit	Chiba Shindencho Daiichi Seimei Bldg., 1-1, Shindencho, Chuo-ku, Chiba-shi, Chiba 260-0027, Japan	+81-43-243-7121

	Location	Telephone Number
Funabashi Branch		
Micro Unit	Funabashi Shoko Kaigisho Kaikan, 1-10-10, Honcho, Funabashi-shi, Chiba 273-0005, Japan	+81-47-433-8252
Tateyama Branch		
Micro Unit	1063-2, Hojo, Tateyama-shi, Chiba 294-0045, Japan	+81-470-22-2911
Matsudo Branch		
Micro Unit	Chibagin Bldg., 7-10, Honcho, Matsudo-shi, Chiba 271-0091, Japan	+81-47-367-1191
Tokyo		
Tokyo Branch		
Micro Unit	Kohko Bldg., 1-9-3, Otemachi, Chiyoda-ku, Tokyo 100-0004, Japan	+81-3-3270-1300
AFFF Unit	Shin-Kohko Bldg., 1-8-2, Otemachi, Chiyoda-ku, Tokyo 100-0004, Japan	+81-3-3270-9791
SME Unit1, Tokyo Branch	Kohko Bldg., 1-9-3, Otemachi, Chiyoda-ku, Tokyo 100-0004, Japan	+81-3-3270-1282
SME Unit2, Tokyo Branch	Shin-Kohko Bldg., 1-8-2, Otemachi, Chiyoda-ku, Tokyo 100-0004, Japan	+81-3-3270-7994
SME Unit3, Tokyo Branch		+81-3-3270-6801
Tokyo-Chuo Branch		
Micro Unit	1-17-28, Shinkawa, Chuo-ku, Tokyo 104-0033, Japan	+81-3-3553-3441
Shinjuku Branch		
Micro Unit SME Unit	1-14-9, Nishishinjuku, Shinjuku-ku, Tokyo 160-0023, Japan	+81-3-3342-4171
		+81-3-3343-1261
Ueno Branch		
Micro Unit	Nihon Seimei Ueno Bldg., 2-18-10, Higashiueno, Taito-ku, Tokyo 110-0015, Japan	+81-3-3835-1391
Koto Branch		
Micro Unit	Nihon Seimei Kinshicho Bldg., 3-7-8, Kotobashi, Sumida-ku, Tokyo 130-0022, Japan	+81-3-3631-8171
Gotanda Branch		
Micro Unit	Nihon Seimei Gotanda Bldg., 1-31-1, Nishigotanda, Shinagawa-ku, Tokyo 141-0031, Japan	+81-3-3490-7370
Omori Branch		
Micro Unit SME Unit	Omori Bellport E Bldg., 6-22-7, Minamioi, Shinagawa-ku, Tokyo 140-0013, Japan	+81-3-3761-7551
		+81-3-5763-3001
Shibuya Branch		
Micro Unit	Nihon Seimei Bldg., 1-21-1, Jinnan, Shibuya-ku, Tokyo 150-0041, Japan	+81-3-3464-3311
Ikebukuro Branch		
Micro Unit SME Unit	Ikebukuro Muromachi Bldg., 2-27-9, Minamiikebukuro, Toshima-ku, Tokyo 171-0022, Japan	+81-3-3983-2131
		+81-3-3986-1261
Itabashi Branch		
Micro Unit	Itabashi Hojin Kaikan, 39-2, Hikawacho, Itabashi-ku, Tokyo 173-0013, Japan	+81-3-3964-1811
Senju Branch		
Micro Unit SME Unit	Mitsui Seimei Kitasenju Bldg., 41-1, Senjunakacho, Adachi-ku, Tokyo 120-0036, Japan	+81-3-3881-6175
		+81-3-3870-2125
Hachioji Branch		
Micro Unit	Manulifeplace Hachioji, 7-3, Azumacho, Hachioji-shi, Tokyo 192-0082, Japan	+81-42-646-7711
Tachikawa Branch		
Micro Unit SME Unit	1-9-15, Nishikicho, Tachikawa-shi, Tokyo 190-8551, Japan	+81-42-524-4191
		+81-42-528-1261
Mitaka Branch		
Micro Unit	Sanshiro Bldg., 3-26-9, Shimorenjaku, Mitaka-shi, Tokyo 181-0013, Japan	+81-422-43-1151
Kanagawa		
Yokohama Branch		
Micro Unit AFFF Unit	2-21-2, Minaminakadori, Naka-ku, Yokohama-shi, Kanagawa 231-8831, Japan	+81-45-201-9912
SME Unit		+81-45-641-1841
	Queens Tower C Bldg., 2-3-5, Minatomirai, Nishi-ku, Yokohama-shi, Kanagawa 220-6216, Japan	+81-45-682-1061
Yokohama Nishiguchi Branch		
Micro Unit	Nihon Seimei Bldg., 1-11-7, Kitasaiwai, Nishi-ku, Yokohama-shi, Kanagawa 220-0004, Japan	+81-45-311-2641
Kawasaki Branch		
Micro Unit	Nihon Seimei Kawasaki Bldg., 1-1, Minamimachi, Kawasaki-ku, Kawasaki-shi, Kanagawa 210-0015, Japan	+81-44-211-1211
Odawara Branch		
Micro Unit	Odawara Shoko Kaikan Bldg., 1-21, Jonai, Odawara-shi, Kanagawa 250-0014, Japan	+81-465-23-3175
Atsugi Branch		
Micro Unit SME Unit	Meiji Yasuda Seimei Atsugi Bldg., 3-11-21, Nakacho, Atsugi-shi, Kanagawa 243-8575, Japan	+81-46-222-3315
		+81-46-297-5071

	Location	Telephone Number
Niigata		
Niigata Branch		
Micro Unit	NBF Niigata Telecom Bldg., 4-4-27, Bandai, Chuo-ku, Niigata-shi, Niigata 950-0088, Japan	+81-25-246-2011
AFFF Unit		+81-25-240-8511
SME Unit		+81-25-244-3122
Nagaoka Branch		
Micro Unit	3-9-23, Senju, Nagaoka-shi, Niigata 940-0087, Japan	+81-258-36-4360
Sanjo Branch		
Micro Unit	Sanjo Shoko Kaigisho Kaikan, 1-20, Sugoro, Sanjo-shi, Niigata 955-0092, Japan	+81-256-34-7511
Takada Branch		
Micro Unit	3-2-1, Omachi, Joetsu-shi, Niigata 943-0833, Japan	+81-25-524-2340
Toyama		
Toyama Branch		
Micro Unit	Toyama Daiichi Seimei Bldg., 2-25, Sakurabashidori, Toyama-shi, Toyama 930-0004, Japan	+81-76-431-1191
AFFF Unit		+81-76-441-8411
SME Unit		+81-76-442-2483
Takaoka Branch		
Micro Unit	Takaoka Shoko Bldg., 1-40, Marunouchi, Takaoka-shi, Toyama 933-0912, Japan	+81-766-25-1171
Ishikawa		
Kanazawa Branch		
Micro Unit	Asahi Seimei Kanazawa Bldg., 6-1, Minamicho, Kanazawa-shi, Ishikawa 920-0919, Japan	+81-76-263-7191
AFFF Unit		+81-76-263-6471
SME Unit		+81-76-231-4275
Komatsu Branch		
Micro Unit	Komatsu Shoko Kaigisho Bldg., Ni-1, Sonomachi, Komatsu-shi, Ishikawa 923-0801, Japan	+81-761-21-9101
Fukui		
Fukui Branch		
Micro Unit	Fukui Shoko Kaigisho Bldg., 2-8-1, Nishikida, Fukui-shi, Fukui 918-8004, Japan	+81-776-33-1755
AFFF Unit		+81-776-33-2385
SME Unit		+81-776-33-0030
Takefu Branch		
Micro Unit	3-1-5, Kitago, Echizen-shi, Fukui 915-0802, Japan	+81-778-23-1133
Yamanashi		
Kofu Branch		
Micro Unit	2-26-2, Marunouchi, Kofu-shi, Yamanashi 400-0031, Japan	+81-55-224-5361
AFFF Unit		+81-55-228-2182
SME Unit		+81-55-228-5790
Nagano		
Nagano Branch		
Micro Unit	1291, Miwatamachi, Nagano-shi, Nagano 380-0816, Japan	+81-26-233-2141
AFFF Unit		+81-26-233-2152
Matsumoto Branch		
Micro Unit	Nihon Seimei Matsumotoekimae Bldg., 1-4-20, Chuo, Matsumoto-shi, Nagano 390-0811, Japan	+81-263-33-7070
SME Unit		+81-263-33-0300
Komoro Branch		
Micro Unit	Komoro Shoko Kaigisho Kaikan, 3-3-3, Aioicho, Komoro-shi, Nagano 384-0025, Japan	+81-267-22-2591
Ina Branch		
Micro Unit	3413-2, Arai, Ina-shi, Nagano 396-0025, Japan	+81-265-72-5195
Gifu		
Gifu Branch		
Micro Unit	2-22, Sengokucho, Gifu-shi, Gifu 500-8819, Japan	+81-58-263-2136
AFFF Unit		+81-58-264-4855
SME Unit		+81-58-265-3171
Tajimi Branch		
Micro Unit	6-2, Aokimachi, Tajimi-shi, Gifu 507-0837, Japan	+81-572-22-6341
Shizuoka		
Shizuoka Branch		
Micro Unit	2-5-1, Tokiwacho, Aoi-ku, Shizuoka-shi, Shizuoka 420-0034, Japan	+81-54-254-4411
AFFF Unit	Southspot Shizuoka, 18-1, Minamicho, Suruga-ku, Shizuoka-shi, Shizuoka 422-8067, Japan	+81-54-286-0233
SME Unit	Daido Seimei Shizuoka Bldg., 59-6, Kuroganecho, Aoi-ku, Shizuoka-shi, Shizuoka 420-0851, Japan	+81-54-254-3631

	Location	Telephone Number
Hamamatsu Branch		
Micro Unit	132-14, Tokiwacho, Naka-ku, Hamamatsu-shi, Shizuoka 430-0917, Japan	+81-53-454-2341
Numazu Branch		
Micro Unit	5-7, Ichibacho, Numazu-shi, Shizuoka 410-8585, Japan	+81-55-931-5281
Aichi		
Nagoya Branch		
Micro Unit AFFF Unit SME Unit	Horiuchi Bldg., 3-25-9, Meieki, Nakamura-ku, Nagoya-shi, Aichi 450-0002, Japan	+81-52-561-6301 +81-52-582-0741 +81-52-551-5181
Nagoya Naka Branch		
Micro Unit	Daiei Bldg., 1-11-20, Nishiki, Naka-ku, Nagoya-shi, Aichi 460-0003, Japan	+81-52-221-7241
Atsuta Branch		
Micro Unit SME Unit	7-30, Tamanoicho, Atsuta-ku, Nagoya-shi, Aichi 456-0025, Japan	+81-52-681-2271 +81-52-682-7881
Toyohashi Branch		
Micro Unit	2-15, Hacchodori, Toyohashi-shi, Aichi 440-0806, Japan	+81-532-52-3191
Okazaki Branch		
Micro Unit	Asahi Seimei Okazaki Bldg., 1-4-2, Karasawacho, Okazaki-shi, Aichi 444-0043, Japan	+81-564-24-1711
Ichinomiya Branch		
Micro Unit	2-3-18, Daishi, Ichinomiya-shi, Aichi 491-0852, Japan	+81-586-73-3131
Mie		
Tsu Branch		
Micro Unit AFFF Unit SME Unit	133, Yorozumachitsu, Tsu-shi, Mie 514-0021, Japan	+81-59-227-5211 +81-59-229-5750 +81-59-227-0251
Yokkaichi Branch		
Micro Unit	9-18, Motomachi, Yokkaichi-shi, Mie 510-0088, Japan	+81-59-352-3121
Ise Branch		
Micro Unit	Mitsui Seimei Bldg., 4-3, Honmachi, Ise-shi, Mie 516-0074, Japan	+81-596-24-5191
Shiga		
Otsu Branch		
Micro Unit AFFF Unit	1-2-28, Hamaotsu, Otsu-shi, Shiga 520-0047, Japan	+81-77-524-1656 +81-77-525-7195
SME Unit	Nihon Seimei Otsu Bldg., 1-1, Suehirocho, Otsu-shi, Shiga 520-0056, Japan	+81-77-524-3825
Hikone Branch		
Micro Unit	11-34, Sawacho, Hikone-shi, Shiga 522-0075, Japan	+81-749-24-0201
Kyoto		
Kyoto Branch		
Micro Unit SME Unit	630, Mototakedacho, Takoyakushi-sagaru, Higashidoin-dori, Nakagyo-ku, Kyoto-shi, Kyoto 604-8145, Japan	+81-75-211-3231 +81-75-221-7825
AFFF Unit	Shijo-Karasuma FT Square, 20, Naginatabokocho, Shijo-dori, Karasuma-higashiiru, Shimogyo-ku, Kyoto-shi, Kyoto 600-8008, Japan	+81-75-221-2147
Nishijin Branch		
Micro Unit	82, Okaminochi, Gozen-dori, Nishiiru, Ichijo-dori, Kamigyo-ku, Kyoto-shi, Kyoto 602-8375, Japan	+81-75-462-5121
Maizuru Branch		
Micro Unit	66, Uoya, Maizuru-shi, Kyoto 624-0923, Japan	+81-773-75-2211
Osaka		
Osaka Branch		
Micro Unit AFFF Unit SME Unit	Umeshin Dai-ichi Seimei Bldg., 2-3-5, Sonezaki, Kita-ku, Osaka-shi, Osaka 530-0057, Japan	+81-6-6315-0301 +81-6-6131-0750 +81-6-6314-7700
JBC Office in West Japan		
Osaka Nishi Branch		
Micro Unit SME Unit	Shin-shinanobashi Bldg., 1-13-47, Nishihonmachi, Nishi-ku, Osaka-shi, Osaka 550-0005, Japan	+81-6-6538-1401 +81-6-4390-0366
Abeno Branch		
Micro Unit SME Unit	3-15-12, Matsuzakicho, Abeno-ku, Osaka-shi, Osaka 545-0053, Japan	+81-6-6621-1441 +81-6-6623-2160
Tamade Branch		
Micro Unit	Meiji Yasuda Seimei Tamade Bldg., 2-15-22, Tamadenaka, Nishinari-ku, Osaka-shi, Osaka 557-0044, Japan	+81-6-6659-1261

	Location	Telephone Number
Juso Branch		
Micro Unit	Mitsui Seimei Juso Bldg., 1-9-24, Shinkitano, Yodogawa-ku, Osaka-shi, Osaka 532-0025, Japan	+81-6-6305-1631
Osaka Minami Branch		
Micro Unit	Shinsaibashi Tokyo Kaijo Nichido Bldg., 2-2-7, Nishishinsaibashi, Chuo-ku, Osaka-shi, Osaka 542-0086, Japan	+81-6-6211-7507
Sakai Branch		
Micro Unit SME Unit	Sakai Shoko Kaigisho Kaikan, 130-23, Nagasonecho, Kita-ku, Sakai-shi, Osaka 591-8025, Japan	+81-72-257-3600 +81-72-255-1261
Suita Branch		
Micro Unit	Urata Bldg., 27-14, Asahimachi, Suita-shi, Osaka 564-0027, Japan	+81-6-6319-2061
Moriguchi Branch		
Micro Unit	4-10, Keihankita-Hondori, Moriguchi-shi, Osaka 570-0094, Japan	+81-6-6993-6121
Izumisano Branch		
Micro Unit	3-1-6, Uemachi, Izumisano-shi, Osaka 598-0007, Japan	+81-72-462-1355
Higashiosaka Branch		
Micro Unit SME Unit	2-9-2, Takaidamotomachi, Higashiosaka-shi, Osaka 577-0054, Japan	+81-6-6782-1321 +81-6-6787-2661
Hyogo		
Kobe Branch		
Micro Unit AFF Unit	5-2-19, Sakaemachidori, Chuo-ku, Kobe-shi, Hyogo, 650-0023, Japan	+81-78-341-4981 +81-78-362-8451
SME Unit	Harborland Dia Nissei Bldg., 1-7-4, Higashikawasakicho, Chuo-ku, Kobe-shi, Hyogo 650-0044, Japan	+81-78-362-5961
Kobe Higashi Branch		
Micro Unit	KHK Nada Bldg., 3-6-15, Tomodacho, Nada-ku, Kobe-shi, Hyogo 657-0035, Japan	+81-78-854-2900
Himeji Branch		
Micro Unit	200, Shinobumachi, Himeji-shi, Hyogo 670-0917, Japan	+81-79-225-0571
Amagasaki Branch		
Micro Unit	4-18-1, Higashinaniwacho, Amagasaki-shi, Hyogo 660-0892, Japan	+81-6-6481-3601
Akashi Branch		
Micro Unit	8-36, Taruyamachi, Akashi-shi, Hyogo 673-0898, Japan	+81-78-912-4114
Toyooka Branch		
Micro Unit	10-6, Chiyodacho, Toyooka-shi, Hyogo 668-0032, Japan	+81-796-22-4327
Nara		
Nara Branch		
Micro Unit AFF Unit	51-1, Nashiharacho, Nara-shi, Nara 630-8253, Japan	+81-742-23-8041 +81-742-26-8781
SME Unit	Nara Center Bldg., 7-1-33, Omiyacho, Nara-shi, Nara 630-8115, Japan	+81-742-35-9910
Wakayama		
Wakayama Branch		
Micro Unit AFF Unit SME Unit	58, Junibancho, Wakayama-shi, Wakayama 640-8158, Japan	+81-73-422-3151 +81-73-423-0644 +81-73-431-9301
Tanabe Branch		
Micro Unit	1666-8, Minato, Tanabe-shi, Wakayama 646-0031, Japan	+81-739-22-6120
Tottori		
Tottori Branch		
Micro Unit AFF Unit SME Unit	Tottori JA-kaikan., 723, Suehiroonsencho Tottori-shi, Tottori 680-0833, Japan	+81-857-22-3156 +81-857-20-2151 +81-857-23-1641
Yonago Branch		
Micro Unit	2-101, Kakubancho, Yonago-shi, Tottori 683-0812, Japan	+81-859-34-5821
Shimane		
Matsue Branch		
Micro Unit AFF Unit SME Unit	Matsue Century Bldg., 111, Tonomachi, Matsue-shi, Shimane 690-0887, Japan	+81-852-23-2651 +81-852-26-1133 +81-852-21-0110
Hamada Branch		
Micro Unit	82-7, Tonomachi, Hamada-shi, Shimane 697-0027, Japan	+81-855-22-2835

	Location	Telephone Number
Okayama		
Okayama Branch		
Micro Unit SME Unit	1-11-13, Tamachi, Kita-ku, Okayama-shi, Okayama 700-0825, Japan	+81-86-225-0011 +81-86-222-7666
AFFF Unit	9-18-401, Togyacho, Kita-ku, Okayama-shi, Okayama 700-0826, Japan	+81-86-232-3611
Kurashiki Branch		
Micro Unit	Fujitoku Bussan Bldg., 2-9-10, Achi, Kurashiki-shi, Okayama 710-0055, Japan	+81-86-425-8401
Tsuyama Branch		
Micro Unit	18-1, Yamashita, Tsuyama-shi, Okayama 708-0022, Japan	+81-868-22-6135
Hiroshima		
Hiroshima Branch		
Micro Unit AFFF Unit	2-3-20, Kokutajimachi, Naka-ku, Hiroshima-shi, Hiroshima 730-0042, Japan	+81-82-244-2231 +81-82-249-9152
SME Unit	Hiroshima Fukuromachi Bldg., 5-25, Fukuromachi, Naka-ku, Hiroshima-shi, Hiroshima 730-0036, Japan	+81-82-247-9151
Kure Branch		
Micro Unit	Meiji-Yasuda Seimei Kure Bldg., 4-9-7-101, Hondori, Kure-shi, Hiroshima 737-0045, Japan	+81-823-24-2600
Onomichi Branch		
Micro Unit	1-6-26, Shinhama, Onomichi-shi, Hiroshima 722-0014, Japan	+81-848-22-6111
Fukuyama Branch		
Micro Unit	2-2-7, Konancho, Fukuyama-shi, Hiroshima 720-0814, Japan	+81-84-922-6550
Yamaguchi		
Yamaguchi Branch		
Micro Unit AFFF Unit	5-2-47, Chuo, Yamaguchi-shi, Yamaguchi 753-0074, Japan	+81-83-922-3660 +81-83-922-2140
Shimonoseki Branch		
Micro Unit SME Unit	2-4-3, Hosoecho, Shimonoseki-shi, Yamaguchi 750-0016, Japan	+81-83-222-6225 +81-83-223-2251
Iwakuni Branch		
Micro Unit	Ichibancho Bldg., 1-8-1, Imazumachi, Iwakuni-shi, Yamaguchi 740-0017, Japan	+81-827-22-6265
Tokuyama Branch		
Micro Unit	4-2, Keimancho, Shunan-shi, Yamaguchi 745-0836, Japan	+81-834-21-3455
Tokushima		
Tokushima Branch		
Micro Unit AFFF Unit SME Unit	1-58, Nakazucho, Tokushima-shi, Tokushima 770-0856, Japan	+81-88-622-7271 +81-88-656-6880 +81-88-625-7790
Kagawa		
Takamatsu Branch		
Micro Unit AFFF Unit SME Unit	COI Takamatsu Bldg., 2-2-7 Kotobukicho, Takamatsu-shi, Kagawa 760-0023, Japan	+81-87-851-0181 +81-87-851-2880 +81-87-851-9141
Ehime		
Matsuyama Branch		
Micro Unit AFFF Unit SME Unit	6-7-3, Sanbancho, Matsuyama-shi, Ehime 790-0003, Japan	+81-89-941-6148 +81-89-933-3371 +81-89-943-1231
Uwajima Branch		
Micro Unit	Shokokaigisho Kaikan, 1-3-24, Marunouchi, Uwajima-shi, Ehime 798-0060, Japan	+81-895-22-4766
Niihama Branch		
Micro Unit	3-3, Shigemotocho, Niihama-shi, Ehime 792-8691, Japan	+81-897-33-9101
Kochi		
Kochi Branch		
Micro Unit AFFF Unit SME Unit	Kochi Chuo Dai-ichi Seimei Bldg., 2-26, Sakaimachi, Kochi-shi, Kochi 780-0834, Japan	+81-88-822-3191 +81-88-825-1091 +81-88-875-0281
Fukuoka		
Fukuoka Branch		
Micro Unit	3-21-12, Hakataekimae, Hakata-ku, Fukuoka-shi, Fukuoka 812-8689, Japan	+81-92-411-9111
AFFF Unit	Tenjinko Bldg., 4-2-20, Tenjin, Chuo-ku, Fukuoka-shi, Fukuoka 810-0001, Japan	+81-92-751-5736
SME Unit	Fukuoka Kogin Bldg., 1-13-2, Tenjin, Chuo-ku, Fukuoka-shi, Fukuoka 810-0001, Japan	+81-92-781-2261

	Location	Telephone Number
Fukuoka Nishi Branch		
Micro Unit	ND Bldg., 1-4-1, Daimyo, Chuo-ku, Fukuoka-shi, Fukuoka 810-0041, Japan	+81-92-712-4381
Kitakyushu Branch		
Micro Unit	Daido Seimei, Kitakyushu Bldg., 1-10-10, Kajimachi, Kokurakita-ku, Kitakyushu-shi, Fukuoka 802-0004, Japan	+81-93-541-7550
Yahata Branch		
Micro Unit	Nihon Seimei Kurosaki Bldg., 3-1-7, Kurosaki, Yahatanishi-ku, Kitakyushu-shi, Fukuoka 806-0021, Japan	+81-93-641-7715
Kurume Branch		
Micro Unit	Mitsui Seimei Bldg., 36-8, Higashimachi, Kurume-shi, Fukuoka 830-0032, Japan	+81-942-34-1212
Saga		
Saga Branch		
Micro Unit AFF Unit SME Unit	4-21, Ekiminamihonmachi, Saga-shi, Saga 840-0816, Japan	+81-952-22-3341 +81-952-27-4120 +81-952-24-7224
Nagasaki		
Nagasaki Branch		
Micro Unit AFF Unit SME Unit	10-4, Daikokumachi, Nagasaki-shi, Nagasaki 850-0057, Japan	+81-95-824-3141 +81-95-824-6221 +81-95-823-6191
Sasebo Branch		
Micro Unit	2-21, Tenmachi, Sasebo-shi, Saga 857-0043, Japan	+81-956-22-9155
Kumamoto		
Kumamoto Branch		
Micro Unit AFF Unit SME Unit	4-22, Anseimachi, Kumamoto-shi, Kumamoto 860-0801, Japan	+81-96-353-6121 +81-96-353-3104 +81-96-352-9155
Yatsushiro Branch		
Micro Unit	4-17, Demachi, Yatsushiro-shi, Kumamoto 866-0857, Japan	+81-965-32-5195
Oita		
Oita Branch		
Micro Unit AFF Unit SME Unit	2-1-12, Miyakomachi, Oita-shi, Oita 870-0034, Japan	+81-97-535-0331 +81-97-532-8491 +81-97-532-4106
Beppu Branch		
Micro Unit	9-1, Mochigahamacho, Beppu-shi, Oita 874-0924, Japan	+81-977-25-1151
Miyazaki		
Miyazaki Branch		
Micro Unit AFF Unit SME Unit	3-6-30, Tachibanadorihigashi, Miyazaki-shi, Miyazaki 880-0805, Japan	+81-985-23-3274 +81-985-29-6811 +81-985-24-4214
Nobeoka Branch		
Micro Unit	1-3-10, Senokuchimachi, Nobeoka-shi, Miyazaki 882-8678, Japan	+81-982-33-6311
Kagoshima		
Kagoshima Branch		
Micro Unit AFF Unit SME Unit	1-26, Meizancho, Kagoshima-shi, Kagoshima 892-0821, Japan	+81-99-224-1241 +81-99-805-0511 +81-99-223-2221
Kanoya Branch		
Micro Unit	8-17, Mukaecho, Kanoya-shi, Kagoshima 893-0006, Japan	+81-994-42-5141
Sendai Branch		
Micro Unit	Meiji-Yasuda Seimei Sendai Bldg., 5-29, Nishimukodacho, Satsumasendai-shi, Kagoshima 895-0027, Japan	+81-996-20-2191

Notes: 1. Operations conducted at branches include those carried out by the Micro Business and Individual Unit; the Agriculture, Forestry, Fisheries and Food Business Unit; and the Small and Medium Enterprise Unit. In the table above, the listing of specific units under a branch indicates that specialist staff members are permanently assigned to conduct respective unit operations at that branch.

2. For branches that do not have permanently assigned specialist staff for a particular unit, consulting services and information provided by specialists from that unit are available through such measures as regular specialist staff visits.

Overseas Network

	Location	Telephone Number
SME Unit		
Representative Office in Shanghai	Room 1616, Shanghai International Trade Centre, 2201, Yan An Xi Road, Shanghai, China	+86-21-6275-8908
Representative Office in Bangkok	14th Floor, Nantawan Bldg., 161 Rajdamri Road, Bangkok, 10330, Thailand	+66-2-252-5496~8
JBIC		
Representative Office in Beijing	2102, Tower C Office Building, YINTAI Center, No.2 Jianguomenwai Avenue, Chaoyang District, Beijing 100022, P.R.C.	+86-10-6505-8989
Representative Office in Bangkok	14th Floor, Nantawan Bldg., 161 Rajdamri Road, Bangkok, 10330, Thailand	+66-2-252-5050
Representative Office in Hanoi	3rd Floor, Sun City, 13 Hai Ba Trung Street, Hoan Kiem District, Hanoi, Viet Nam	+84-4-3824-8934~6
Representative Office in Jakarta	Summitas II 5th Floor, Jl. Jenderal Sudirman, Kav. 61-62, Jakarta Selatan, Indonesia	+62-21-5220693
Representative Office in Manila	11/F, Tower 1, The Enterprise Center, 6766 Ayala Avenue corner Paseo de Roxas, Makati City, Philippines	+63-2-856-7711~4
Representative Office in Singapore	9 Raffles Place, #51-02 Republic Plaza, Singapore 048619	+65-6557-2806
Representative Office in New Delhi	1st Floor, The Metropolitan Hotel New Delhi, Bangla Sahib Road, New Delhi, 110001, India	+91-11-4352-2900
Sydney Office	Suite 2501, Level 25, Gateway, 1 Macquarie Place, Sydney, N.S.W. 2000, Australia	+61-2-9241-1388
Representative Office in Moscow	123610 Moscow, Krasnopresnenskaya Nab.12, World Trade Center, Office No.905, Russian Federation	+7-495-258-1832, 1835,1836
Representative Office in London	4th Floor, River Plate House, 7-11 Finsbury Circus, London, EC2M 7EX, U.K.	+44-20-7638-0175
Representative Office in Paris	21, Boulevard de la Madeleine, 75038 Paris Cedex 01, France	+33-1-4703-6190
Representative Office in Dubai	9th Floor, West, The Gate Dubai International Financial Center, P.O. Box 121300, Dubai, U.A.E.	+971-4-363-7091
Representative Office in New York	712 Fifth Avenue 26th Floor New York, NY 10019 U.S.A.	+1-212-888-9500
Representative Office in Washington, D.C.	1627 Eye Street, N.W., Suite 500, Washington, D.C., 20006, U.S.A.	+1-202-785-1785
Representative Office in Buenos Aires	Av. Del Libertador No.498, Piso19, 1001 Capital Federal, Buenos Aires, Argentina	+54-11-4394-1379, 1803
Representative Office in Mexico City	Paseo de la Reforma 222-900B, Col. Juárez, Del. Cuauhtémoc, México D.F., C.P. 06600, México	+52-55-5525-6790
Representative Office in Rio de Janeiro	Praia de Botafogo, 228- 801B (Setor A), Botafogo, CEP 22359-900, Rio de Janeiro, RJ, Brazil	+55-21-2554-2305

Note: The Representative Office in Bangkok is operated by the SME Unit and JBIC.

3 History of JFC

Overview of JFC

JFC Activities

Overview of Operations

Systems for Operational Management

Organization and History

Data

[Micro Business and Individual Unit]

Date	People's Finance Corporation-related events	Environmental Sanitation Business Financing Corporation-related events
Jun. 1949	People's Finance Corporation established	
Oct. 1953	Start of Loans Secured by Government Pensions commence	
Dec. 1957	Start of Loans Secured by Government Bonds Issued to Repatriated Individuals	
Sep. 1967		Environmental Sanitation Business Financing Corporation established
Oct. 1967	Start of trustee operations for Environmental Sanitation Business Financing Corporation upon its creation	
Jun. 1968	Start of Loans for Modernization of Grocery Retailers	
Jul. 1972		Private financial institutions begin to be engaged directly for trustee operations
Oct. 1973	Start of Managerial Improvement Loans	Start of special loans for business improvement of small enterprises
Jan. 1979	Start of Educational Loans	
Jan. 1982		Start of direct loan operations
Apr. 1982	Start of trustee operations for Labor Welfare Corporation	
Jan. 1988	Start of trustee operations for Pension Welfare Service Public Corporation	
Apr. 1988		Start of Loans for Business Promotion
Sep. 1997	Cabinet decision reached on Reorganization and Rationalization Plan for Special Public Corporations covering integration of People's Finance Corporation and Environmental Sanitation Business Financing Corporation	Cabinet decision reached on Reorganization and Rationalization Plan for Special Public Corporations covering integration of People's Finance Corporation and Environmental Sanitation Business Financing Corporation
May 1999	National Life Finance Corporation Act (or Act on Partial Revision of People's Finance Corporation Act) enacted	National Life Finance Corporation Act (or Act on Partial Revision of People's Finance Corporation Act) enacted

[Agriculture, Forestry, Fisheries and Food Business Unit]

Date	Events
Apr. 1953	Agriculture, Forestry and Fisheries Finance Corporation established and starts cosigned loans
Oct. 1955	Owner-Farmer Support and Establishment Loan introduced
Sep. 1958	Direct loan starts
Mar. 1961	Daily Plant Facilities Loan introduced
Mar. 1963	Agricultural, Forestry and Fisheries Structure Improvement Promotion Loan introduced
Jun. 1968	Comprehensive Farm Facilities Loan and Wholesale Market Modernization Loan introduced
Apr. 1970	Depopulated Areas Loan introduced
Jun. 1970	Loans transferred from the Special Account of Funds for Settlers
Oct. 1976	Fisheries Management Rehabilitation Loan introduced
Mar. 1978	Fisheries Products Processing Loan introduced
Jul. 1989	Specific Products Processing Loan introduced
Apr. 1990	Land Extensive Farming Reinforcement Loan and Hilly Mountainous Areas Revitalization Loan introduced
Aug. 1991	Food Distribution System Improvement Loan introduced
Oct. 1993	Farmland Aggregation for Fostering Principal Farmers Loan introduced
Jun. 1994	Agricultural Management Framework Reinforcement Loan introduced
Aug. 1994	Forest Improvement and Revitalization Loan introduced
Jul. 1998	HACCP Plant Facilities Loan introduced
Oct. 1999	Stable Food Supply Facilities Loan introduced
Nov. 1999	Environmentally Friendly Livestock Farming Loan introduced
May 2001	Farm Management Reinforcement Loan and Farm Management Stabilization Loan introduced
Jul. 2002	Investment in Agribusiness Investment & Consultation, Ltd. commenced
Dec. 2005	Cabinet Decision on Important Policy for Administrative Reform
May 2006	Act on Promotion of Administrative Reform for Realization of Small and Efficient Government enacted
Jun. 2006	System Design regarding the Reform of Policy-based Finance adopted by the council for the Reform of policy-based Finance
Apr. 2007	Agriculture, Forestry and Fisheries Safety Net Loan introduced
May 2007	Japan Finance Corporation Act promulgated

[Japan Finance Corporation]

Date	Events
Oct. 2008	JFC is established under the Japan Finance Corporation Act
Mar. 2010	The revised Japan Finance Corporation Act goes enforced (The promotion of overseas business for preserving the global environment was added to the scope of JBIC operations)
Apr. 2010	Financial account established to facilitate the realignment of U.S. forces in Japan.
Aug. 2010	The Act on the Promotion of Businesses to Develop and Manufacture Energy and Environmentally Friendly Products goes into effect (Beginning of Operations to Facilitate Specific Businesses Promotion)
Apr. 2011	The Japan Bank for International Cooperation Act is passed. (Decision to separate JBIC from JFC effective April 1, 2012)
Jul. 2011	The revised Act on Special Measures for Industrial Revitalization and Innovation goes into effect (Beginning of Operations to Facilitate Business Restructuring Promotion, etc.)

[Small and Medium Enterprise (SME) Unit]

Date	Japan Finance Corporation for Small and Medium Enterprise-related events	Small Business Credit Insurance Corporation-related events
Aug. 1953	Japan Finance Corporation for Small and Medium Enterprise established	Small Business Credit Insurance Corporation (Japan CIC) established (Credit insurance operations for small and medium enterprises and loan operations to Credit Guarantee Corporations transferred from Small and Medium Enterprise Agency) Japan CIC takes over machinery credit insurance operations of Machinery and Information Industries Bureau, Ministry of International Trade and Industry (MITI), following partial revision to Machinery Credit Insurance Act
Sep. 1953	Agency loans commenced	
Oct. 1955	Direct loans commenced	
Jul. 1958		
Oct. 1984		
Jun. 1998	Eligibility criteria of SMEs for loans expanded as a result of partial revision to the Japan Finance Corporation for Small and Medium Enterprise Act	
Dec. 1998		
Jul. 1999		
Dec. 1999	Definition of SMEs for loans expanded as a result of partial revision to the Japan Finance Corporation for Small and Medium Enterprise Act	
Feb. 2000	Scope of operations expanded as a result of partial revision to the Japan Finance Corporation for Small and Medium Enterprise Act (corporate bond acquisition operations commenced) Business categories for loans expanded as a result of partial revision to the Order for Enforcement of the Japan Finance Corporation for Small and Medium Enterprise Act	
Apr. 2003		
Jul. 2004	Scope of operations expanded as a result of partial revision to the Japan Finance Corporation for Small and Medium Enterprise Act (Securitization Support Programs commenced, JASMEC's Credit Insurance Programs are inherited.)	Following implementation of Act on Temporary Measures concerning Special Provisions of Credit Insurance for Medium-sized Enterprise Financed by Bankrupt Financial Institution, operations on special insurance for midsize enterprises commenced
Dec. 2005	Cabinet Decision on Important Policy for Administrative Reform	Japan Small and Medium Enterprise Corporation-related events
May 2006	Act on Promotion of Administrative Reform for Realization of Small and Efficient Government enacted	Japan Small and Medium Enterprise Corporation (JASMEC) established and takes over operations of Small Business Credit Insurance Corporation, Japan Small Business Corporation and Textile Industry Restructuring Agency
Jun. 2006	System Design regarding the Reform of Policy-based Finance adopted by the council for the Reform of policy-based Finance	
May 2007	Japan Finance Corporation Act promulgated	

[Japan Bank for International Cooperation]

Date	The Export-Import Bank of Japan-related events	The Overseas Economic Cooperation Fund (OECF)-related events
Dec. 1950	"Japan Export Bank Act" enacted	"The Overseas Economic Cooperation Fund, Japan (OECF) was established, and took over Southeast Asia Development Cooperation Fund.
Apr. 1952	The bank changed name to "The Export-Import Bank of Japan"	
Dec. 1960	"The Overseas Economic Cooperation Fund, Japan Act" enacted	
Mar. 1961		
Apr. 1999	The Japan Bank for International Cooperation Act promulgated	
Sep. 1999	Cabinet Order related to the execution of the Japan Bank for International Cooperation Act promulgated Ministerial Ordinance related to the execution of the Japan Bank for International Cooperation Act published on official register	
Sep. 1999	Cabinet Order related to the execution of the Japan Bank for International Cooperation Act promulgated Ministerial Ordinance related to the execution of the Japan Bank for International Cooperation Act published on official register	
Oct. 1999	JBIC established (takes over operations of Export-Import Bank of Japan and those of OECF)	
Oct. 2003	"JBIC Guidelines for Confirmation of Environmental and Social Considerations" and "Procedures to Submit Objections Concerning JBIC Guidelines for Confirmation of Environmental and Social Considerations" enforced	
Dec. 2005	Cabinet Decision on Important Policy for Administrative Reform	
May 2006	Act on Promotion of Administrative Reform for Realization of Small and Efficient Government enacted	
Jun. 2006	System Design regarding the Reform of Policy-based Finance adopted by the council for the Reform of policy-based Finance	
Nov. 2006	Partial Amendment to the Act on the Japan International Cooperation Agency, Independent Administrative Agency promulgated	
May 2007	Japan Finance Corporation Act promulgated	
Sep. 2007	The Act on Special Measures Concerning Effective Realignment of the U.S. Forces in Japan enacted	

